

# 2021

## MDi



### NON-SLIP PRODUCTS

STYLE-**in**

 **inalco**



INALCO's wide range of non-slip products combines design appeal with the high technical performance required for more demanding projects.

Their outstanding technical characteristics include a high resistance, capacity to withstand sharp temperature changes, and almost nil water absorption, making them ideal for use in wet areas and outdoor ones, like terraces, exterior staircases and swimming pools, among others.

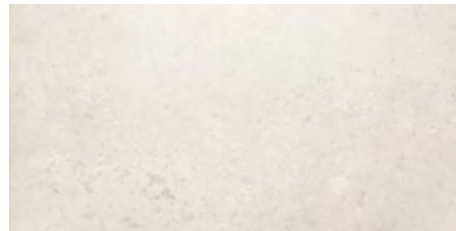
The collections are also conspicuous for their elegant modern designs, allowing for seamless continuity between indoor and outdoor spaces: a much sought-after characteristic by professionals, who highlight the added value of INALCO's products.

INALCO's non-slip floor surfaces comply with the slip resistance safety requirements of leading international standards.



NON-SLIP PRODUCT: CLASS 3 - R12 - A+B+C

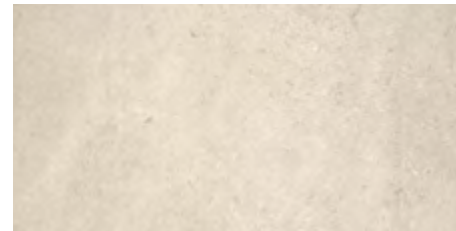
NON-SLIP PRODUCT: CLASS 3 - R12 - A+B+C



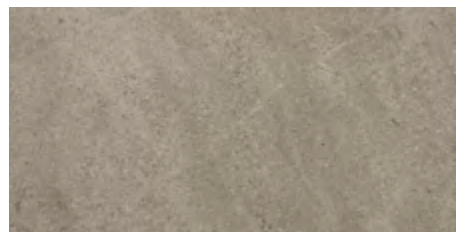
MASAI  
Blanco Plus



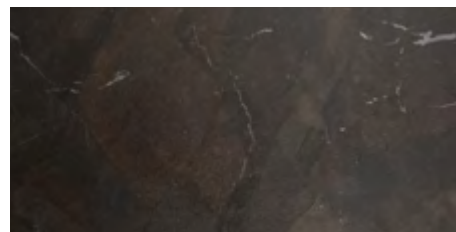
PACIFIC  
Blanco Plus



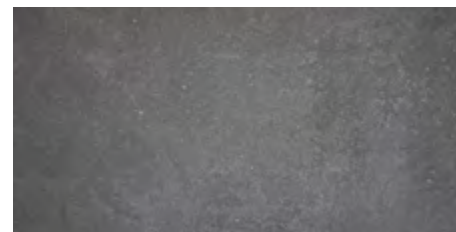
PETRA  
Crema



JASPER  
Moka



UMBRA  
Marrón



MOON  
Gris

PRODUCT	FORMAT	THICKNESS	PACKING					
			SQM Box	Kg Box	Pieces Box	Cajas Palet	SQM Palet	Kg Palet
JASPER MOKA NON-SLIP	100 x 100 cm	10,5 mm	2	49	2	24	48	1235
MASAI BLANCO PLUS NON-SLIP								
PACIFIC BLANCO PLUS NON-SLIP								
PETRA CREMA NON SLIP								
PACIFIC BLANCO PLUS NON-SLIP	100 x 100 cm	20 mm	1	50	1	24	24	1254,72
PETRA CREMA NON SLIP								
MOON GRIS NON-SLIP	20 x 30	20 mm	0,24	11,16	4	128	30,72	1360
UMBRA MARRÓN NON-SLIP								
MOON GRIS NON-SLIP	20 x 20	20 mm	0,24	11,17	6	120	26,80	1361
UMBRA MARRÓN NON-SLIP								

ASTM-C 1028 COF STANDARD	ANSI A 137.1 DCOF STANDARD	UNE-ENV 12633 STANDARD	DIN 51130 STANDARD	DIN 51097 STANDARD
>0.6 Dry and wet	>0.42 Dry and wet	CLASS 3* (Results > 65)	R12*	A+B+C*

\* INALCO's non-slip products easily exceed the maximum slip resistance safety requirements of leading international standards.



## NON-SLIP VALUES OF INALCO PRODUCTS

COLLECTION	ASTM-C 1028-96: COF STANDARD	ANSI A 137.1: 2012 DCOF STANDARD	UNE-ENV 12633 STANDARD	DIN 51130 STANDARD	DIN 51097 STANDARD
<b>ALEA</b> Natural	>0.6 Dry and wet	>0.42 Dry and wet	CLASS 1	R9	A
<b>ANANDA</b> Sandblasted	>0.6 Dry and wet	>0.42 Dry and wet	CLASS 2	R10	A+B
<b>ARIZONA</b> Natural	>0.6 Dry and wet	>0.42 Dry and wet	CLASS 1	R9	A
<b>ASTRAL</b> Natural	>0.6 Dry and wet	>0.42 Dry and wet	CLASS 1	R9	A
<b>AZALAI</b> Natural	>0.6 Dry and wet	>0.42 Dry and wet	CLASS 1	R9	A
<b>BLOOM</b> Bush-hammered	>0.6 Dry and wet	>0.42 Dry and wet	CLASS 2	R10	A+B
<b>BOREAL</b> Natural	>0.6 Dry and wet	>0.42 Dry and wet	CLASS 1	R9	A
<b>BOSCO</b> Natural	>0.6 Dry and wet	>0.42 Dry and wet	CLASS 1	R9	A
<b>FLUORITE</b> Natural	>0.6 Dry and wet	>0.42 Dry and wet	CLASS 1	R9	A
<b>FUSION</b> Natural	>0.6 Dry and wet	>0.42 Dry and wet	CLASS 1	R9	A
<b>GEO</b> Bush-hammered	>0.6 Dry and wet	>0.42 Dry and wet	CLASS 2	R10	A+B
<b>GROUND</b> Natural	>0.6 Dry and wet	>0.42 Dry and wet	CLASS 1	R9	A
<b>ICE</b> Natural	>0.6 Dry and wet	>0.42 Dry and wet	CLASS 1	R9	A
<b>ISEO</b> Bush-hammered	>0.6 Dry and wet	>0.42 Dry and wet	CLASS 2	R10	A+B
<b>JASPER</b> Bush-hammered	>0.6 Dry and wet	>0.42 Dry and wet	CLASS 2	R10	A+B
<b>JASPER</b> Non-slip	>0.6 Dry and wet	>0.42 Dry and wet	CLASS 3	R12	A+B+C
<b>JOY</b> Natural	>0.6 Dry and wet	>0.42 Dry and wet	CLASS 1	R9	A
<b>LARSEN</b> Natural	>0.6 Dry and wet	>0.42 Dry and wet	CLASS 1	R9	A
<b>MASAI</b> Bush-hammered	>0.6 Dry and wet	>0.42 Dry and wet	CLASS 2	R10	A+B
<b>MASAI</b> Non-slip	>0.6 Dry and wet	>0.42 Dry and wet	CLASS 3	R12	A+B+C
<b>METEORA</b> Bush-hammered	>0.6 Dry and wet	>0.42 Dry and wet	CLASS 2	R10	A+B

## NON-SLIP VALUES OF INALCO PRODUCTS

COLLECTION	ASTM-C 1028-96: COF STANDARD	ANSI A 137.1: 2012 DCOF STANDARD	UNE-ENV 12633 STANDARD	DIN 51130 STANDARD	DIN 51097 STANDARD
<b>MOON</b> Bush-hammered	>0.6 Dry and wet	>0.42 Dry and wet	CLASS 2	R10	A+B
<b>MOON</b> Non-Slip	>0.6 Dry and wet	>0.42 Dry and wet	CLASS 3	R12	A+B+C
<b>OXIDE</b> Natural	>0.6 Dry and wet	>0.42 Dry and wet	CLASS 1	R9	A
<b>PACIFIC</b> Bush-hammered	>0.6 Dry and wet	>0.42 Dry and wet	CLASS 2	R10	A+B
<b>PACIFIC</b> Non-slip	>0.6 Dry and wet	>0.42 Dry and wet	CLASS 3	R12	A+B+C
<b>PETRA</b> Natural	>0.6 Dry and wet	>0.42 Dry and wet	CLASS 2	R10	A+B
<b>PETRA</b> Bush-hammered	>0.6 Dry and wet	>0.42 Dry and wet	CLASS 2	R10	A+B
<b>PETRA</b> Non-slip	>0.6 Dry and wet	>0.42 Dry and wet	CLASS 3	R12	A+B+C
<b>RIFT</b> Natural	>0.6 Dry and wet	>0.42 Dry and wet	CLASS 1	R9	A
<b>SENDA</b> Natural	>0.6 Dry and wet	>0.42 Dry and wet	CLASS 2	R10	A+B
<b>SILK</b> Natural	>0.6 Dry and wet	>0.42 Dry and wet	CLASS 1	R9	A
<b>SILK</b> Bush-hammered	>0.6 Dry and wet	>0.42 Dry and wet	CLASS 2	R10	A+B
<b>STORM</b> Natural	>0.6 Dry and wet	>0.42 Dry and wet	CLASS 1	R9	A
<b>SYROS</b> Natural	>0.6 Dry and wet	>0.42 Dry and wet	CLASS 1	R9	A
<b>TOUCHÉ</b> Natural	>0.6 Dry and wet	>0.42 Dry and wet	CLASS 1	R9	A
<b>TOUCHÉ</b> Bush-hammered	>0.6 Dry and wet	>0.42 Dry and wet	CLASS 2	R10	A+B
<b>UMBRA</b> Bush-hammered	>0.6 Dry and wet	>0.42 Dry and wet	CLASS 2	R10	A+B
<b>UMBRA</b> Non-slip	>0.6 Dry and wet	>0.42 Dry and wet	CLASS 3	R12	A+B+C
<b>VINT</b> Natural	>0.6 Dry and wet	>0.42 Dry and wet	CLASS 1	R9	A
<b>VINT</b> Bush-hammered	>0.6 Dry and wet	>0.42 Dry and wet	CLASS 2	R10	A+B



INDUSTRIAS ALCORENSES CONFEDERADAS S.A.

C/ San Salvador, 54

12110, Alcora, Castellón (Spain)

Tel. (+34) 964 368 000

[www.inalco.es](http://www.inalco.es) [www.inalcotrends.com](http://www.inalcotrends.com)

