

MDi



NON-SLIP FLOOR SURFACES

STYLE-in |  inalco



INALCO's wide range of non-slip products combines design appeal with the high technical performance required for more demanding projects.

Their outstanding technical characteristics include a high resistance, capacity to withstand sharp temperature changes, and almost nil water absorption, making them ideal for use in wet areas and outdoor ones, like terraces, exterior staircases and swimming pools, among others.

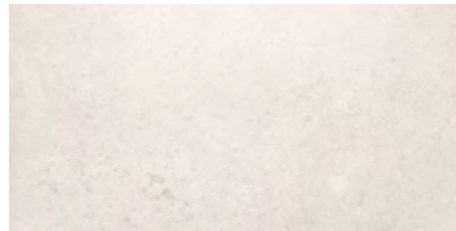
The collections are also conspicuous for their elegant modern designs, allowing for seamless continuity between indoor and outdoor spaces: a much sought-after characteristic by professionals, who highlight the added value of INALCO's products.

INALCO's non-slip floor surfaces comply with the slip resistance safety requirements of leading international standards.



NON-SLIP PRODUCT: CLASS 3 - R12 - A+B+C

NON-SLIP PRODUCT: CLASS 3 - R12 - A+B+C



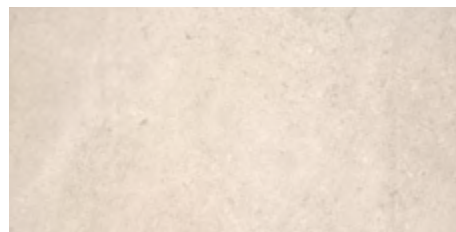
MASAI
Blanco Plus



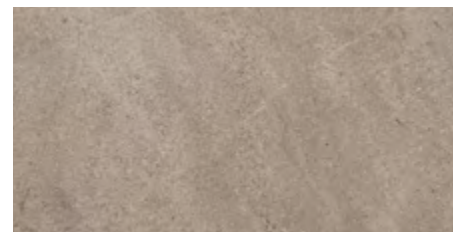
PACIFIC
Blanco Plus



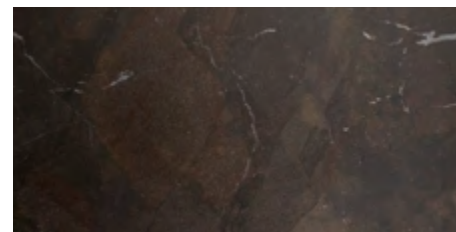
ANANDA
Blanco



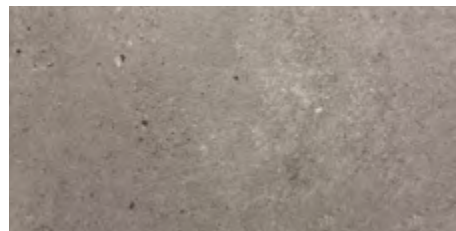
PETRA
Crema



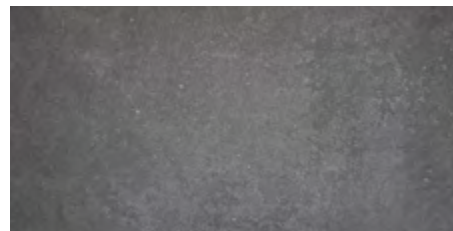
JASPER
Moka



UMBRA
Marrón



TOTEM
Gris



MOON
Gris

PRODUCT	FORMAT	THICKNESS	PACKING					
			M ² Box	Kg Box	Pieces Box	Boxes Pallet	M ² Pallet	Kg Pallet
ANANDA BLANCO NON-SLIP	100 x 100 cm	6 mm	2	27,60	2	24	48	714
TOTEM GRIS NON-SLIP								
JASPER MOKA NON-SLIP	100 x 100 cm	10,5 mm	2	49	2	24	48	1235
MASAI BLANCO PLUS NON-SLIP								
PACIFIC BLANCO PLUS NON-SLIP								
PETRA CREMA NON SLIP								
PACIFIC BLANCO PLUS NON-SLIP	100 x 100 cm	20 mm	1	50	1	24	24	1254,72
PETRA CREMA NON SLIP								
MOON GRIS NON-SLIP	20 x 30	20 mm	0,24	11,16	4	128	30,72	1360
UMBRA MARRÓN NON-SLIP								
MOON GRIS NON-SLIP	20 x 20	20 mm	0,24	11,17	6	120	26,80	1361
UMBRA MARRÓN NON-SLIP								

NORM ASTM-C 1028 COF	NORM ANSI A 137.1 DCOF	NORM UNE-ENV 12633	NORM DIN 51130	NORM DIN 51097
> 0,6 Dry and wet	> 0,42 Dry and wet	CLASS 3* (Results > 65)	R12*	A+B+C*

* INALCO's non-slip products highly exceed the maximum slip resistance safety requirements of leading international standards.

NON-SLIP VALUES OF INALCO PRODUCTS

COLLECTION	NORM ASTM-C 1028-96: COF	NORM ANSI A 137.1: 2012 DCOF	NORM UNE-ENV 12633	NORM DIN 51130	NORM DIN 51097
ALEA Natural	> 0,6 Dry and wet	> 0,42 Dry and wet	CLASS 1	R9	A
ANANDA Digital Texture	> 0,6 Dry and wet	> 0,42 Dry and wet	CLASS 2	R10	A+B
ANANDA Non-Slip	> 0,6 Dry and wet	> 0,42 Dry and wet	CLASS 3	R12	A+B+C
ARIZONA Natural	> 0,6 Dry and wet	> 0,42 Dry and wet	CLASS 1	R9	A
ASTRAL Natural	> 0,6 Dry and wet	> 0,42 Dry and wet	CLASS 1	R9	A
AZALAI Natural	> 0,6 Dry and wet	> 0,42 Dry and wet	CLASS 1	R9	A
BALKAN Digital Texture	> 0,6 Dry and wet	> 0,42 Dry and wet	CLASS 2	R10	A+B
BLOOM Bush-hammered	> 0,6 Dry and wet	> 0,42 Dry and wet	CLASS 2	R10	A+B
BOREAL Natural	> 0,6 Dry and wet	> 0,42 Dry and wet	CLASS 1	R9	A
BOSCO Natural	> 0,6 Dry and wet	> 0,42 Dry and wet	CLASS 1	R9	A
FLUORITE Natural	> 0,6 Dry and wet	> 0,42 Dry and wet	CLASS 1	R9	A
FUSION Natural	> 0,6 Dry and wet	> 0,42 Dry and wet	CLASS 1	R9	A
GEO Bush-hammered	> 0,6 Dry and wet	> 0,42 Dry and wet	CLASS 2	R10	A+B
GROUND Natural	> 0,6 Dry and wet	> 0,42 Dry and wet	CLASS 1	R9	A
ICE Natural	> 0,6 Dry and wet	> 0,42 Dry and wet	CLASS 1	R9	A
ISEO Bush-hammered	> 0,6 Dry and wet	> 0,42 Dry and wet	CLASS 2	R10	A+B
JASPER Bush-hammered	> 0,6 Dry and wet	> 0,42 Dry and wet	CLASS 2	R10	A+B
JASPER Non-Slip	> 0,6 Dry and wet	> 0,42 Dry and wet	CLASS 3	R12	A+B+C
JOY Natural	> 0,6 Dry and wet	> 0,42 Dry and wet	CLASS 1	R9	A
KORTEN Digital Texture	> 0,6 Dry and wet	> 0,42 Dry and wet	CLASS 2	R10	A+B
LARSEN Natural	> 0,6 Dry and wet	> 0,42 Dry and wet	CLASS 1	R9	A
MASAI Bush-hammered	> 0,6 Dry and wet	> 0,42 Dry and wet	CLASS 2	R10	A+B
MASAI Non-Slip	> 0,6 Dry and wet	> 0,42 Dry and wet	CLASS 3	R12	A+B+C



NON-SLIP VALUES OF INALCO PRODUCTS

COLLECTION	NORM ASTM-C 1028-96: COF	NORM ANSI A 137.1: 2012 DCOF	NORM UNE-ENV 12633	NORM DIN 51130	NORM DIN 51097
METALLO Natural	> 0,6 Dry and wet	> 0,42 Dry and wet	CLASS 1	R9	A
METEORA Bush-hammered	> 0,6 Dry and wet	> 0,42 Dry and wet	CLASS 2	R10	A+B
MOON Bush-hammered	> 0,6 Dry and wet	> 0,42 Dry and wet	CLASS 2	R10	A+B
MOON Non-Slip	> 0,6 Dry and wet	> 0,42 Dry and wet	CLASS 3	R12	A+B+C
PACIFIC Bush-hammered	> 0,6 Dry and wet	> 0,42 Dry and wet	CLASS 2	R10	A+B
PACIFIC Non-Slip	> 0,6 Dry and wet	> 0,42 Dry and wet	CLASS 3	R12	A+B+C
PETRA Natural	> 0,6 Dry and wet	> 0,42 Dry and wet	CLASS 2	R10	A+B
PETRA Bush-hammered	> 0,6 Dry and wet	> 0,42 Dry and wet	CLASS 2	R10	A+B
PETRA Non-Slip	> 0,6 Dry and wet	> 0,42 Dry and wet	CLASS 3	R12	A+B+C
RIFT Natural	> 0,6 Dry and wet	> 0,42 Dry and wet	CLASS 1	R9	A
SENDA Natural	> 0,6 Dry and wet	> 0,42 Dry and wet	CLASS 2	R10	A+B
SILK Natural	> 0,6 Dry and wet	> 0,42 Dry and wet	CLASS 1	R9	A
SILK Bush-hammered	> 0,6 Dry and wet	> 0,42 Dry and wet	CLASS 2	R10	A+B
STORM Natural	> 0,6 Dry and wet	> 0,42 Dry and wet	CLASS 1	R9	A
SYROS Natural	> 0,6 Dry and wet	> 0,42 Dry and wet	CLASS 1	R9	A
TOTEM Bush-hammered	> 0,6 Dry and wet	> 0,42 Dry and wet	CLASS 2	R10	A+B
TOTEM Non-Slip	> 0,6 Dry and wet	> 0,42 Dry and wet	CLASS 3	R12	A+B+C
TOUCHÉ Natural	> 0,6 Dry and wet	> 0,42 Dry and wet	CLASS 1	R9	A
TOUCHÉ Bush-hammered	> 0,6 Dry and wet	> 0,42 Dry and wet	CLASS 2	R10	A+B
UMBRA Bush-hammered	> 0,6 Dry and wet	> 0,42 Dry and wet	CLASS 2	R10	A+B
UMBRA Non-Slip	> 0,6 Dry and wet	> 0,42 Dry and wet	CLASS 3	R12	A+B+C
VINT Natural	> 0,6 Dry and wet	> 0,42 Dry and wet	CLASS 1	R9	A
VINT Bush-hammered	> 0,6 Dry and wet	> 0,42 Dry and wet	CLASS 2	R10	A+B



INDUSTRIAS ALCORENSES CONFEDERADAS S.A.

C/ San Salvador, 54

12110, Alcora, Castellón (Spain)

Tel. (+34) 964 368 000

www.inalco.es www.inalcotrends.com

